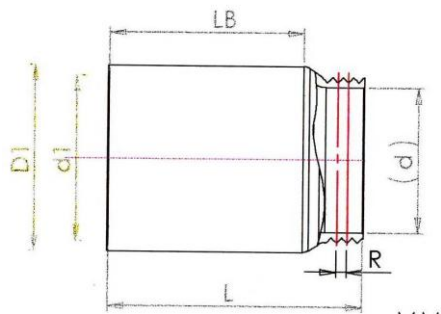




PRODUCT SPECIFICATION

SHORT COUPLING METAL SLEEVE MMAC

TYPE	COMPOSITION	D1 +0,2	d1 +0,2	d +0,2	D	LR	L +2	UNITS/ BOX
AISCAN-MMAC-16	STEEL	18,3	16,2	13,6	M16X1,5	6,5	36,5	25
AISCAN-MMAC-20	“	22,3	20,3	17,6	M20X1,5	6,5	41,5	25
AISCAN-MMAC-25	“	28	25,3	22,6	M25X1,5	7	45	25
AISCAN-MMAC-32	“	35,4	32,3	29,2	M32X1,5	8	52	25
AISCAN-MMAC-40	“	43,4	40,5	37,2	M40X1,5	8	54	25
AISCAN-MMAC-50	“	53,4	50,5	47,2	M50X1,5	9	64	12
AISCAN-MMAC-63	“	67	63,6	59,6	M63X1,5	10,5	75,5	6
EDITION DATE	EDITION NUMBER	CARD NUMBER						
2009/02	2	EP-MMAC						



SPECIFICATIONS ACCORDING TO STANDARD UNE-EN 61386-21

- CODE: 555711542010
- OPERATING TEMPERATURE RANGE: -45 + 400°C
- CRUSHING STRENGTH: > 4000N
- IMPACT RESISTANCE: >20J AT -45°C
- CORROSION RESISTANCE: MEDIUM
- FLAME PROPAGATE: NO
- MATERIAL: COLD ROLLED STEEL WITH LOW CONTENT CARBON. QUALITY TYPE DC03, IN ACCORDING TO STANDARD EN-10130. ELECTRO-GALVANIZED FINISH.

- NO CONTROLLED COPY. THIS INFORMATION COULD BE MODIFIED BY AISCAN WHITOUT PREVIOUS ADVERTISMENT.-